

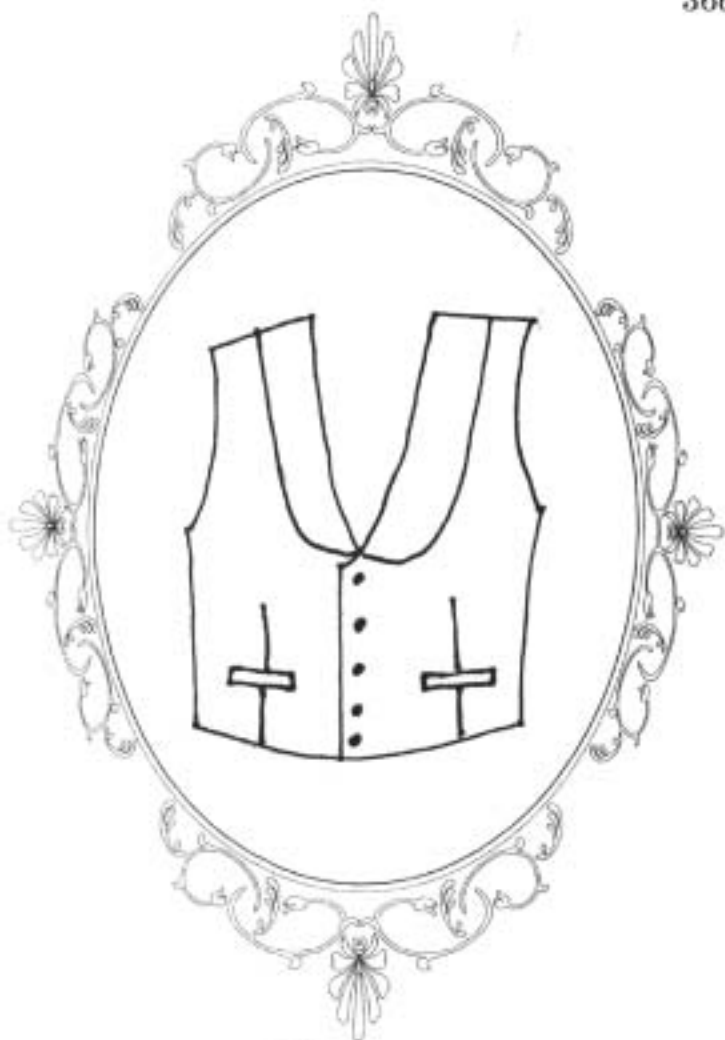
# *Timeless Stitches*

*Lynne Harriman*

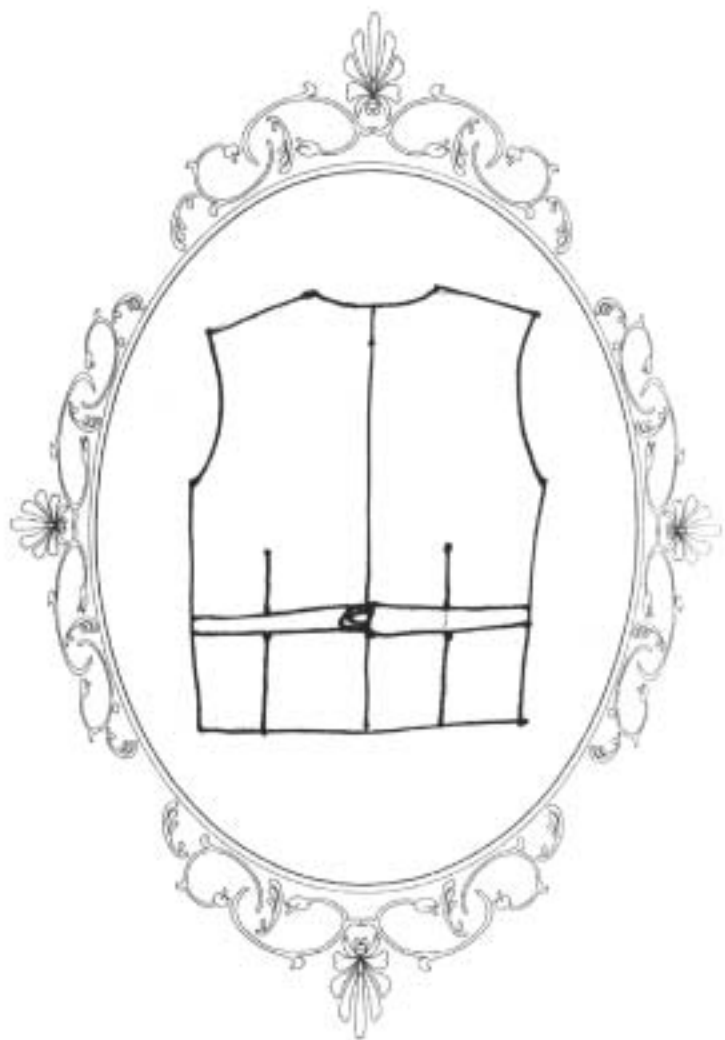
7060 Joy Rd

Everson, WA 98247

360-966-5132



*Front*



*Back*

*TSM-732*

*Shawl Collar Vest*

# *Shawl Collar Vest*

## *TSM-732*

Men would rarely be seen in public, in their shirtsleeves, they usually wore a vest over any shirt. Much like women's underpinnings, men's shirts were considered underwear and it was considered impolite to be seen in just a shirt. Vests also provided an additional layer of clothing as protection against the cold. This pattern is for a shawl-collared vest that has a mid-level opening. Depending on the fabric chosen, this style of vest would have been worn from the early 1850's through the late 70's and mid 80's. The vest has two welt-pockets towards the waist line. The collar of the vest can be made of the same fabric as the vest front or of a contrasting fabric. The back of the vest is straight across and designed to come even with the waistband of the trousers. The back is fitted, using shallow darts and a belt. If a more utilitarian vest is desired, the pattern can be made up without the collar.



### **Fabric Requirements:**

Fashion fabric: ¾ yd small and medium sizes / 1 yd for large and X-large sizes.

Back fabric: ¾ yd small and medium sizes / 1 yd for large and X-large sizes.

Lining (muslin) 1 ½ yds 45" wide muslin or neutral colored cotton

5 medium buttons

1 – 1" vest belt buckle or slide

### **Sizing:**

Use Chest measurement to choose the size desired. You may also want to check that the largest circumference of the waist will be covered by the waist measurement.

SIZE	Small		Medium			Large			X-Large	
	34	36	38	40	42	44	46	48	50	52
<b>Chest</b>	34	36	38	40	42	44	46	48	50	52
<b>Waist</b>	28	30	32	34	36	39	42	44	46	48
<b>Hips (at seat)</b>	35	37	39	41	43	45	47	49	51	53
<b>Neck</b>	15	15	16	16	16	17	17	17	18	18



## *Timeless Stitches*

Lynne Harriman

7060 Joy Rd. Everson, WA 98247 (360) 966-5132

Check out our website at [www.tstitches.com](http://www.tstitches.com)